



Transition Metals

Homathko

New Porphyry and Epithermal Opportunity in British Columbia



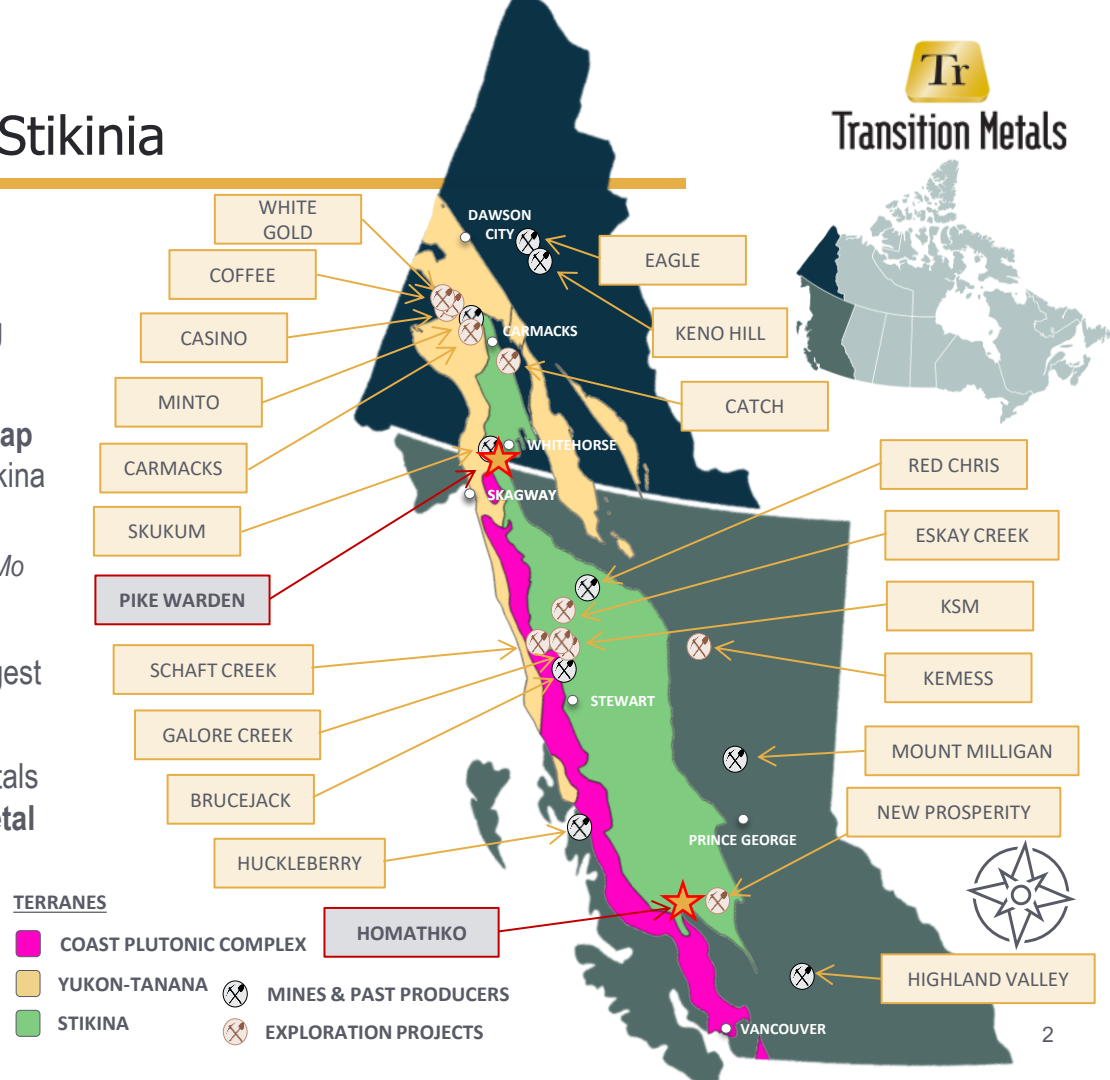
XTM – TSXV | Project Presentation

Q1/2026

Project Location

Underexplored Section of Prolific Stikinia

- Located in interior BC, 200 km west of Willams Lake.
- Eastern portion of property accessible from road heading south from Tatlayoko Lake.
- **South of BC's Golden Triangle**, in an **underexplored gap** on the margin the Coast Plutonic Suite and Southern Stikina terranes:
 - *Galore Creek, Shaft Creek, Red Chris – **Porphyry** Cu, Au, Mo*
 - *Eskay Creek, KSM, Brucejack – **Epithermal** Au, Ag*
- **60 km west** of the New Prosperity project, Canada's largest development-stage copper porphyry system.
- Recent work in the area by Kingfisher and Transition Metals highlights the potential for **new epithermal precious metal and porphyry copper deposits** in this underexplored portion of the southern interior of BC.



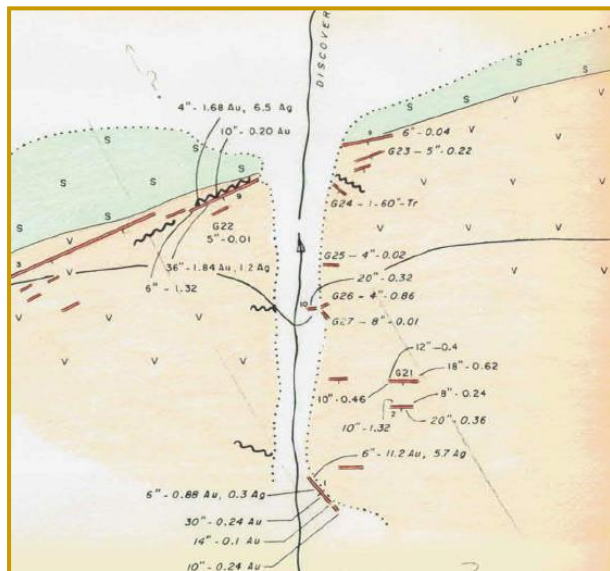
Discovery Story

Mining Hall of Famer - JJ McDougall Prospect



Transition Metals


- High-grade gold (up to 11 oz/t) was discovered along retreating glacier margins by Falconbridge in the **1960s** at what became the Discovery Creek Showing; the find wasn't publicly disclosed until 2007.
- As glaciers receded, Transition Metals relocated the showings and staked the ground in **2010**.
- Follow-up field programs initially focused on mapping the extent and structural control of the mineralized outcrops.



RECOMMENDATIONS

It is recommended that assessment work be recorded on the main claim group with the possibility in mind (which there are no experts to deny) of an increase in the price of gold. In such a case the Discovery Zone trend could be more closely prospected through the surrounding volcanic rocks and a drill could test this largely overburdened section at depth within the Buff horizon. By this time the glaciers, judging by their present rate of retreat (the Buff Zone was probably ice-covered when the area was last prospected seriously) may show uphill veins of interest.

Vancouver, B.C.
January 7, 1966


J. J. McDougall
Geologist.

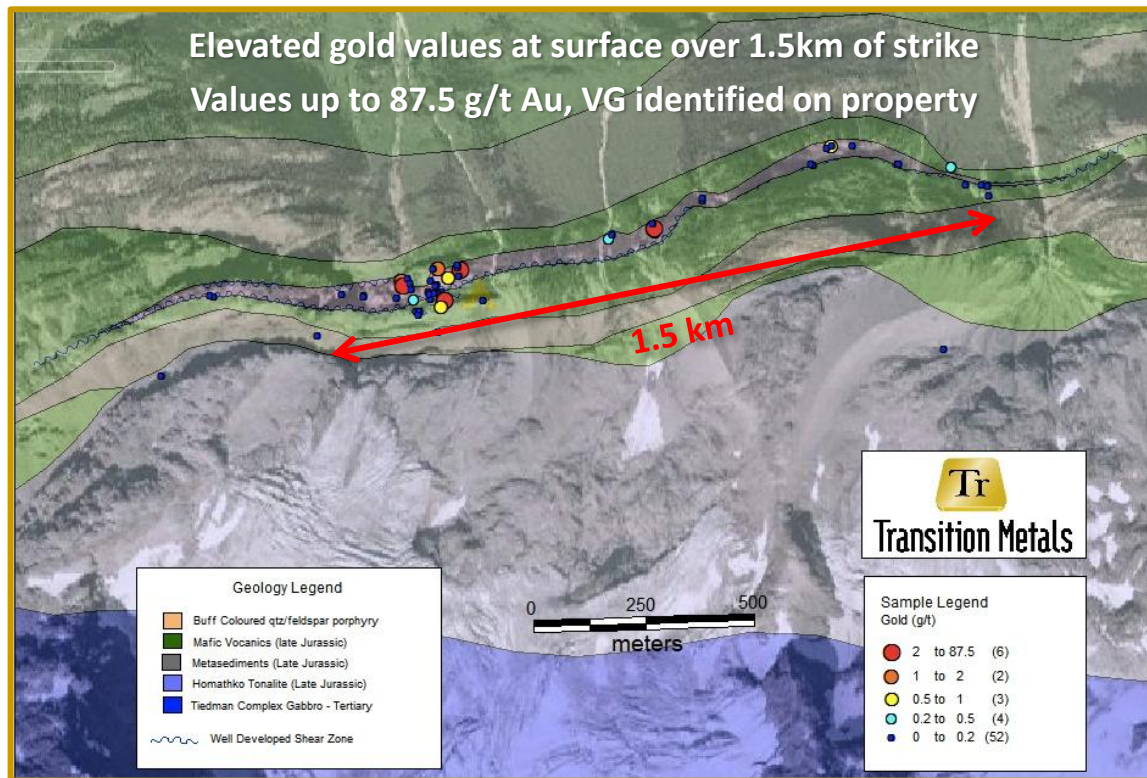
Early Focus for Transition Metals

Defines 1.5km Trend of Gold at Discovery Creek



Transition Metals

- Mesothermal veins formed within a broad shear zone.
- Carbonate-fuchsite-altered mafic volcanics in the hanging wall host **auriferous veins with visible gold**.
- Extensive quartz-carbonate veining occurs in and around a shear-bounded altered quartz-feldspar porphyry sill.
- Sheared, carbonate-altered sulphidic metasediments in the footwall also carry elevated gold.
- The bounding structure extends **>1.5 km and is 10–60 m wide**.
- Transition's work has highlighted **three drill-ready targets** in connection with the Discovery Creek Zone.



Drill-Ready, High-Grade Gold Targets

Project Maturity and Partnership History



Transition Metals

- The project remains at an early exploration stage, positioning it for value creation through targeted advancement.
- Multiple **drill-ready, high-grade gold targets** have attracted interest from junior partners, including **Homerun Resources (2017)** and **Aurum Lake Mining (2023)**.
- Exploration programs focused on **cost-effective data acquisition** to assess the property within a broader regional framework while maintaining tenure and option agreements; completed work programs include:
 - Remote sensing studies
 - Airborne geophysical surveys
 - Hyperspectral satellite analysis
 - Prospecting and surface sampling
- Land position expanded to **~100 km²**, consolidating the broader mineral system.
- Although neither partner elected to vest, the programs generated **high-quality exploration datasets** that identified **additional targets** and opportunities across the property.
- The **Discovery Creek Gold drill target remains undrilled**, preserving clear upside for future exploration.



Photo: Showing extend of outcropping mineralization exposed by receding glaciers circa 2012.

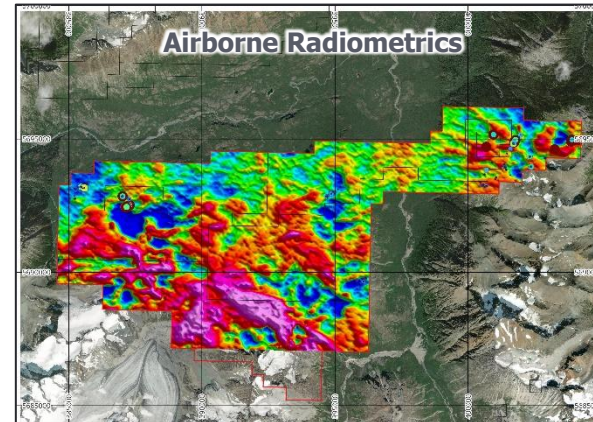
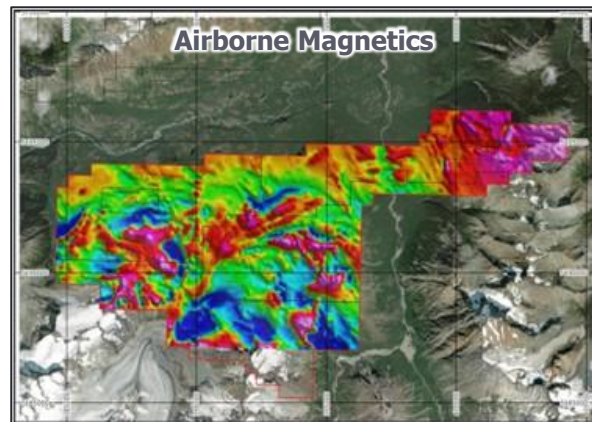
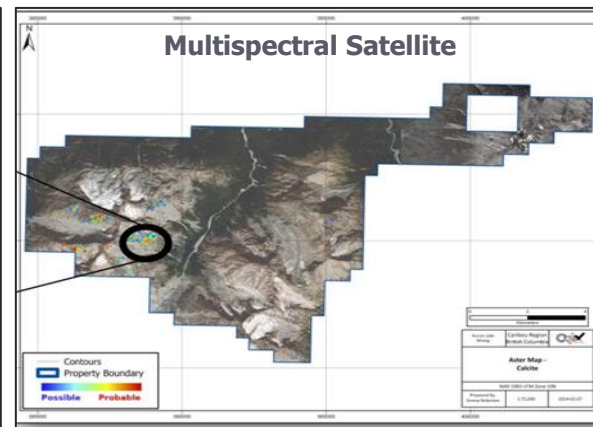
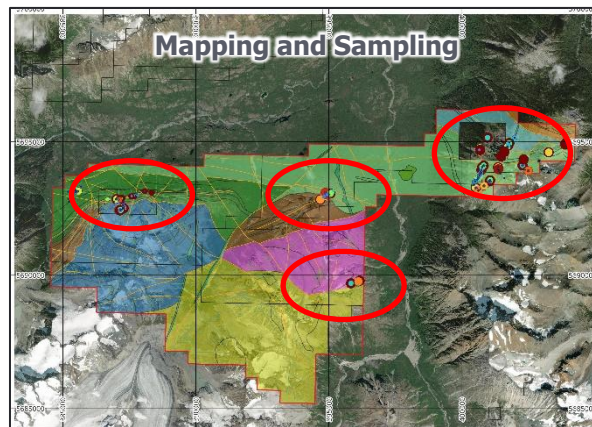
Property Scale Datasets

Highlight New Target Areas



Transition Metals

- Mapping and sampling constrain the geology and highlight numerous new showings hosting elevated **Au, Ag, Sb, As, and Cu**.
- ASTER hyperspectral satellite imagery highlights new gossans and alteration exposed by receding glaciers.
- Property covered by a high-resolution mag and radiometric survey in 2023.
- Large **coincident magnetic and potassic alteration features** highlighted in eastern portion of property associated with **copper mineralization**.



Glacial Retreat

Provides Extensive New Bedrock Exposure



- Snowpack and glacial coverage has in many places receded several hundreds of metres up slope exposing new mineral occurrences.
- Field program in 2024 completed to visit new areas of exposure in areas highlighted by regional datasets and complete ground truthing of mineral prospectivity mapping exercise results.

2024 Field Program

Highlight Assay Rock Sample Results

Sample_ID	Area	Easting	Northing	Au_ppm	Ag_ppm	Cu_ppm	As_ppm	Sb_ppm	Zn_ppm
D843242	East Copper	403,253	5,694,610	0.123	7.8	10,250.0	7.5	2.7	54.0
D843245	East Copper	403,873	5,694,905	1.640	9.3	7,880.0	29.0	7.8	186.0
D843246	East Copper	403,873	5,694,905	0.395	5.1	2,980.0	8.1	1.5	183.0
D843260	East Copper	402,313	5,694,341	0.216	0.3	178.0	9.8	7.4	66.0
D843288	Discovery Ceek	387,148	5,692,433	0.032	6.3	2,640.0	238.0	2.0	52.0
D843317	Discovery Ceek	387,021	5,692,851	0.111	1.8	681.0	31.8	2.2	9,740.0
D843319	Naden South	396,155	5,689,795	0.291	0.2	19.2	114.0	0.5	31.0
D843322	Naden South	396,104	5,689,766	0.149	0.2	28.4	188.0	1.1	33.0
D84323	Naden South	395,827	5,689,697	0.059	0.2	41.4	1,040.0	3.1	16.0
E812188	Morris Mine	400,956	5,569,161	0.061	1.5	2,940.0	5.6	2.2	49.0
E812190	Morris Mine	400,678	5,694,701	0.644	7.9	2,690.0	>10,000	53.6	115.0
E812235	East Copper	401,775	5,694,958	0.004	2.0	2,490.0	11.8	1.3	80.0
E812236	East Copper	401,735	5,694,873	0.049	1.2	1,255.0	31.5	5.4	45.0
E812240	East Copper	401,594	5,694,634	0.062	0.8	55.0	2,280.0	>10,000	58.0



Morris Mine



Naden South



Discovery Creek



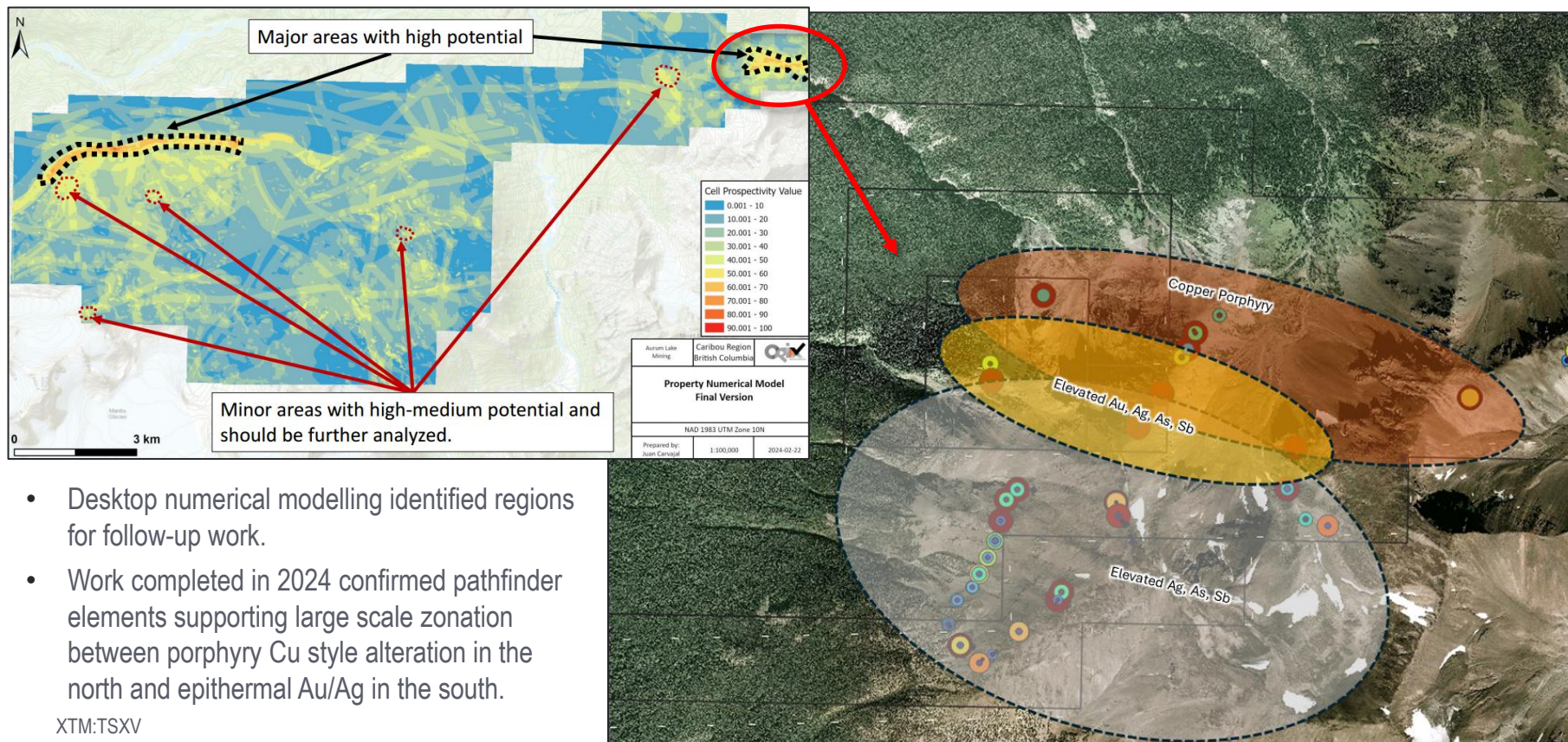
East Copper

Large Scale Zonation Identified

From Porphyry to Epithermal Mineralization

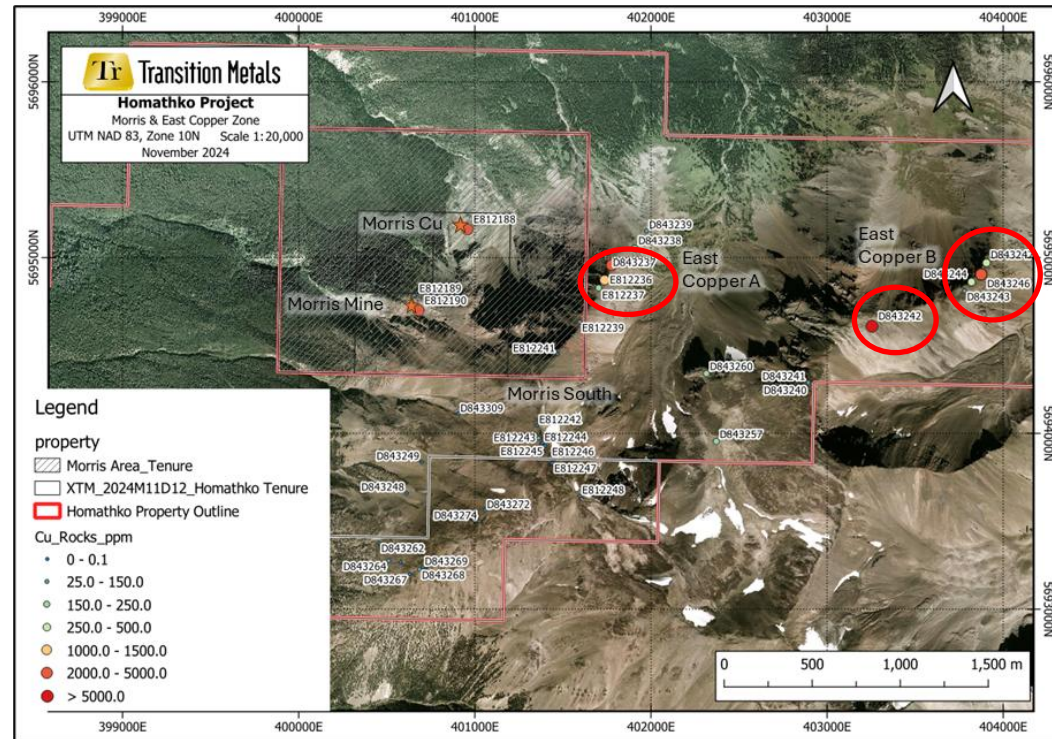


Transition Metals



Tr
Transition Metals

Morris South & East Copper Showings

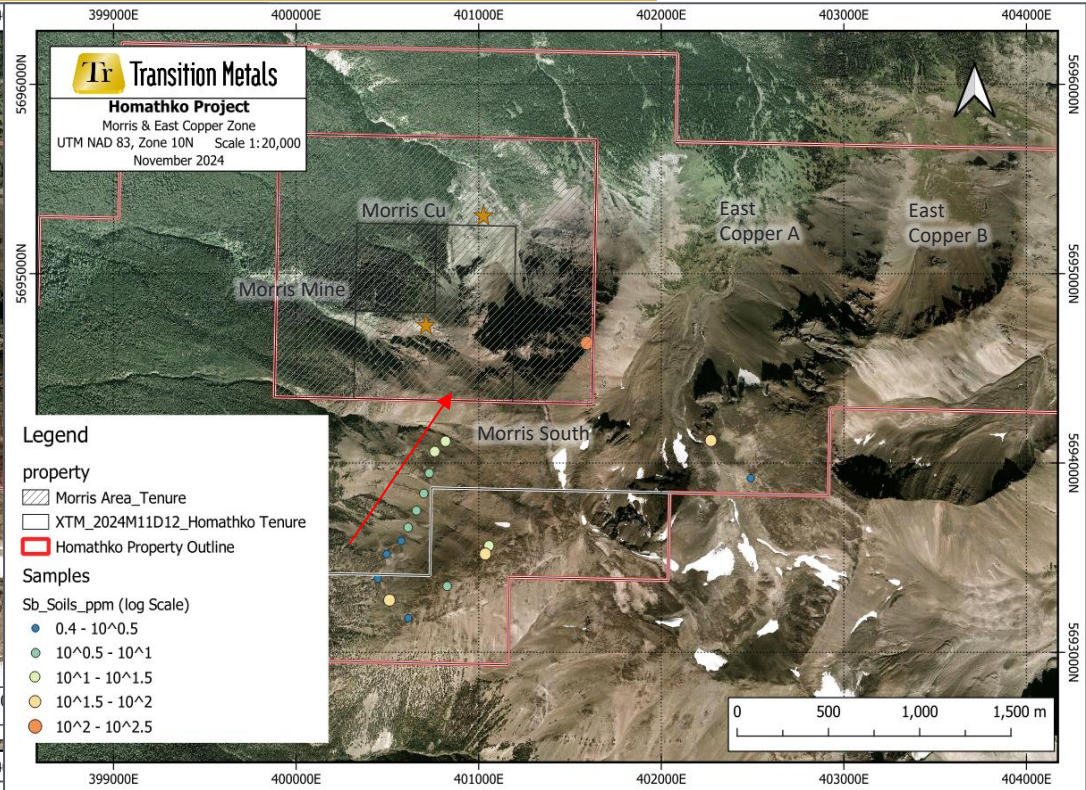
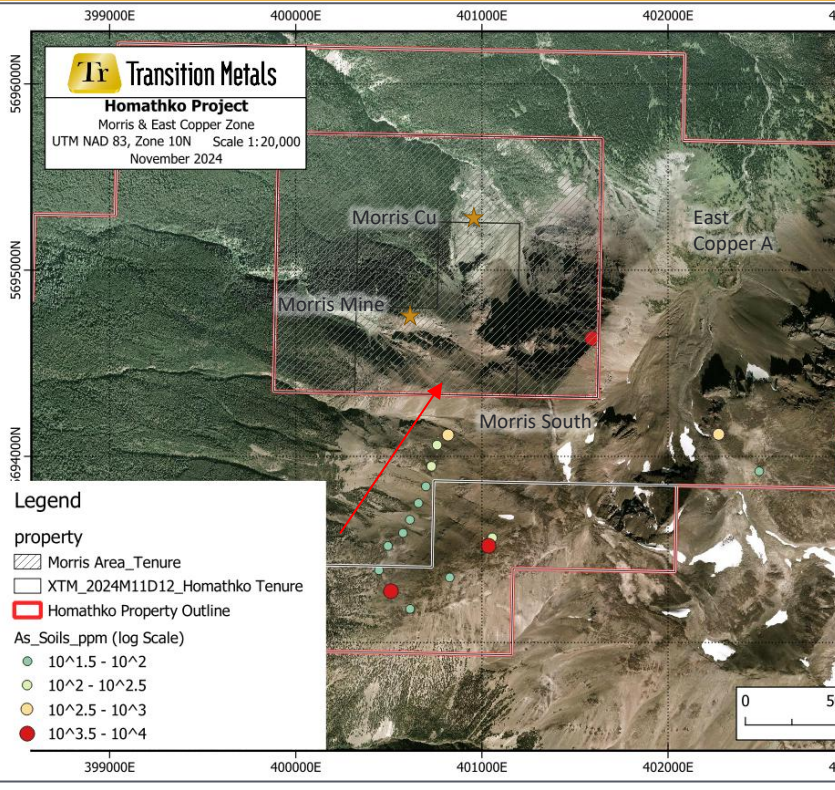


- Anomalous gold values up to 1.64ppm Au.
- Multiple samples returned up to 10,250ppm (1.25%) Cu, associated with newly discovered exposures of porphyritic intrusions with fracture-controlled malachite and disseminated pyrite & chalcopyrite.

XTM:TSXV

Elevated Pathfinder Elements in Soils

Morris South & East Copper Showings



Area displays elevated anomalous soil samples across multiple pathfinder elements, (e.g., As, Ag, Sb, Au), highlighting previously unrecognized polymetallic potential of this area.

Opportunities Waiting

At Morris South and East Copper



Transition Metals

- Areas, like East Copper, with elevated Cu & Mo that are associated with higher temperature epidote/hematite-magnetite alteration exhibit favourable characteristics associated with **porphyry copper systems**.
- Occurrences associated with carbonate sericite/clay altered rocks hosting elevated Sb, Au, and Ag are consistent with the development of **high sulphidation epithermal styles of mineralization** that may be related to more peripheral/separate intrusion-driven Au/Ag/Sb systems, like at Morris South.



Next Steps and Timing

Acting on the Demonstrated Exploration Potential

- Results of 2024 program demonstrate **significant exploration potential** at Homathko, with zones like Discovery Creek remaining an attractive drill-ready gold target, and the Copper East zone emerging as a new area with polymetallic opportunities on a large scale.
- These newly highlighted areas would be prime zones for expanded geochemical soil survey, mapping, and possibly a geophysical survey.



Forward-Looking Statement

Certain information contained in this presentation, includes information and statements which may contain words such as "could", "plans", "should", "anticipates", "expect", "believe", "will", "upcoming" and similar expressions and statements relating to matters that are not historical facts are forward-looking information. All of the forward-looking information contained in this presentation is qualified by this cautionary statement. There can be no assurance that the actual results or developments anticipated by Transition Metals Corp as expressed or implied by the forward-looking information, will be realized or, even if substantially realized, that they will have the expected consequences to or effects on Transition Metals Corp or its business operations. Transition Metals Corp disclaims any intention or obligation to update or revise any forward-looking information as a result of new information or future events. Readers should not place undue reliance on forward-looking information.

Mitigating Risk. Multiplying Opportunities.

Scott McLean HBS^{c.}, P.Geo.
CEO & Co-founder

smclean@transitionmetalscorp.com
9C – 1351 Kelly Lake Road
Sudbury ON P3E 5P5
Telephone: 705-669-1777