

HIGHLAND GOLD

PROJECT HIGHLIGHTS

XTM – TSXV | Q1 2021



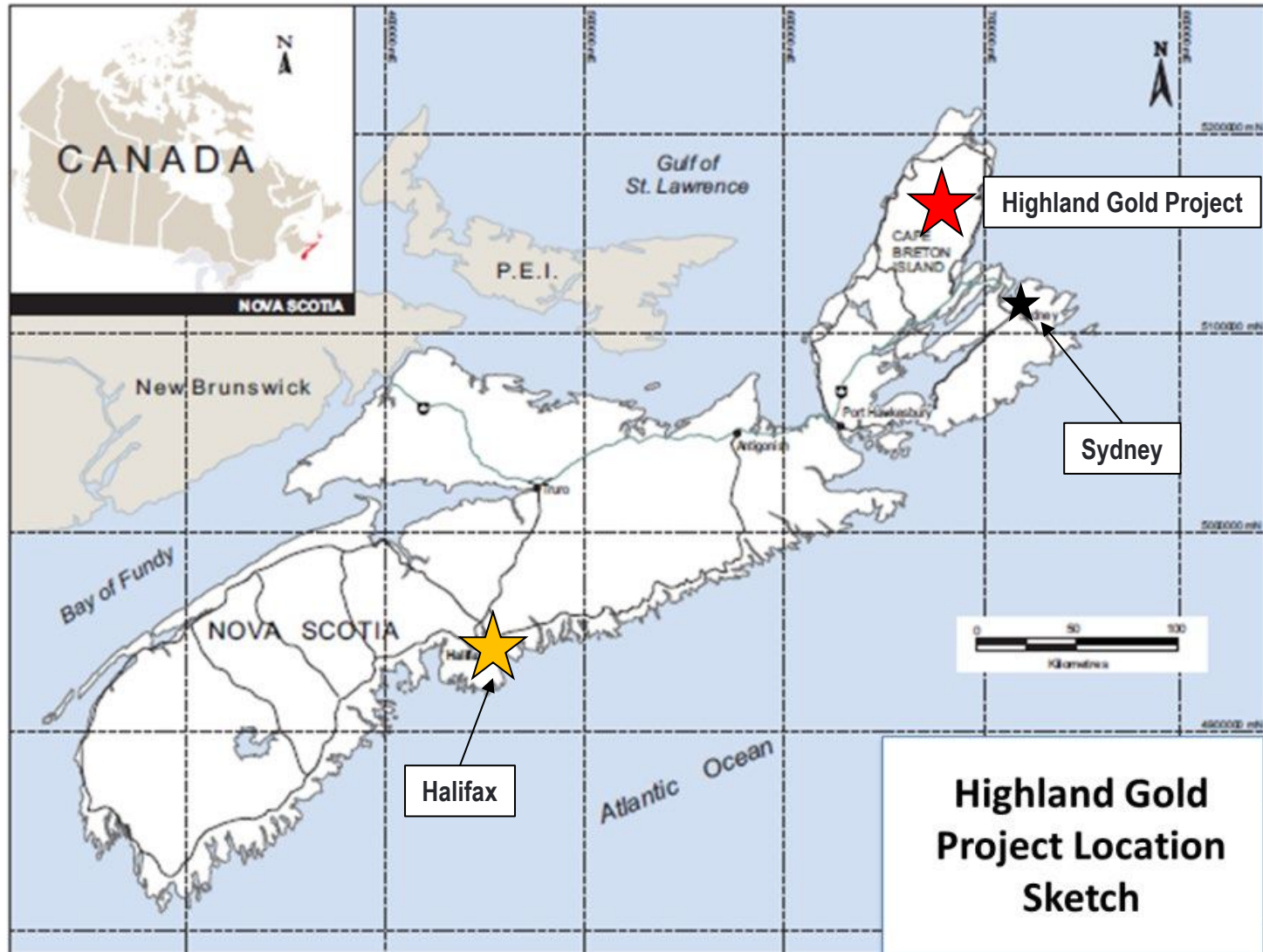
HIGHLAND GOLD PROJECT KEY POINTS

- PROPERTY COVERS SOURCE OF LARGE REGIONAL STREAM SEDIMENT GOLD ANOMALY OUTLINED IN THE 1980s
- DESPITE EXTENSIVE COVER, BOULDER TRACING AND TRENCHING HAS RESULTED IN THE IDENTIFICATION OF MORE THAN 30+ BEDROCK GOLD SHOWINGS
- TRANSITION OWNS OR HAS THE OPTION TO OWN A 100% INTEREST MINING LICENSES COVERING MORE THAN 107 KM² IN NOVA SCOTIA
- SIMILAR AGE AND GEOLOGY TO GOLD DEPOSITS IN THE CAROLINAS, NEWFOUNDLAND, AND THE BRITISH ISLANDS



HIGHLAND GOLD PROJECT

- The property is located ~60 km northwest of Sydney, Nova Scotia
- 107 km² crown-land licenses with good road and trail access



HIGHLANDS REGIONAL GEOLOGY

- Suture between Ordovician - Silurian volcanics and sediments of Gander Zone, and Late Proterozoic sediments, volcanics, and intrusives of Avalon Zone
- The Avalon hosts mesothermal and epithermal gold
 - Carolina Slate Belt Brewer (0.2 M oz), Ridgeway (1.5 M oz), Haile (4.4 M oz)
 - NFLD Hope Brook (0.84 M oz Indicated, 0.11 M oz Inferred)
 - Ireland / Scotland Currahginalt ~4 M oz, Cavancaw 0.8 M oz, Cononish

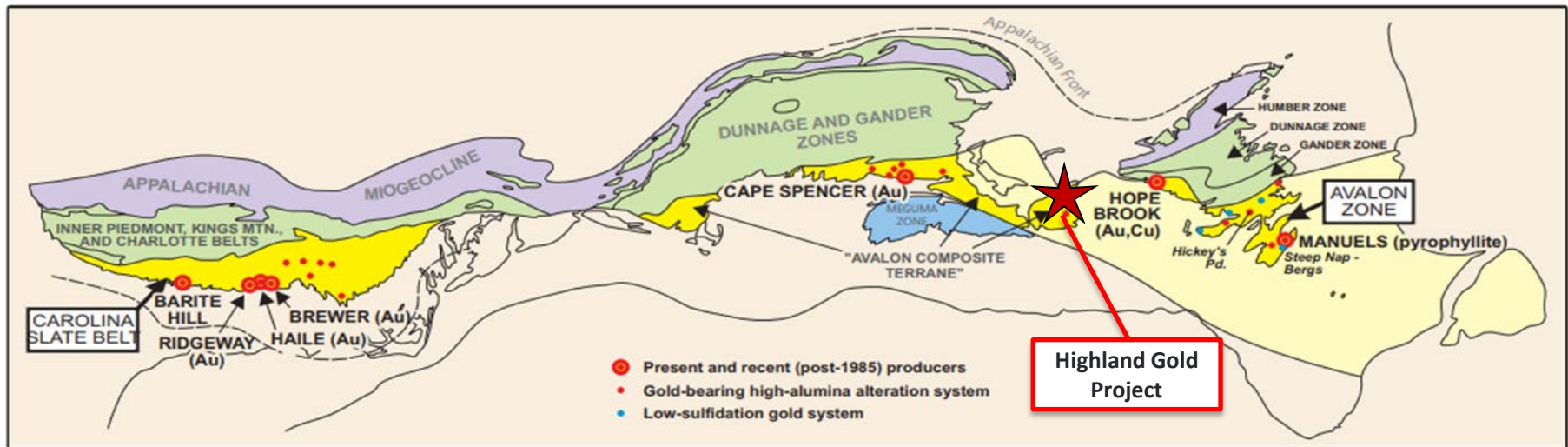


Figure 3: Distribution of Avalonian rocks within the Appalachian Orogen (modified from O'Brien, Dubé and O'Driscoll, 1999; base map modified from William and Hatcher, 1983).

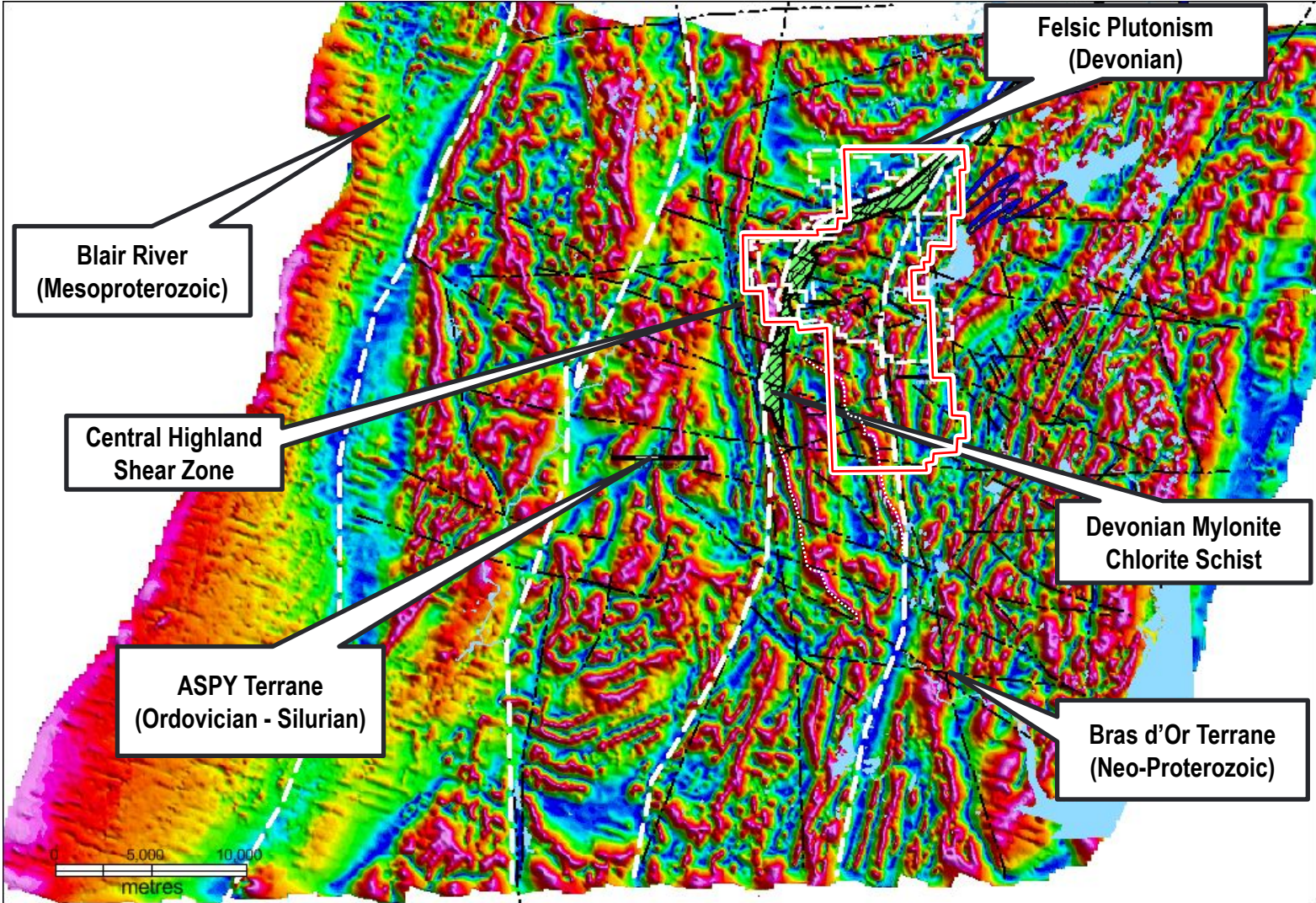
REGIONAL SETTING

Total Field Magnetics



Transition Metals

3 main structural trends (NNW, NNE and NE) intersect creating a strong dilational geometry along NW and NE directions that hosts gold-bearing quartz veins



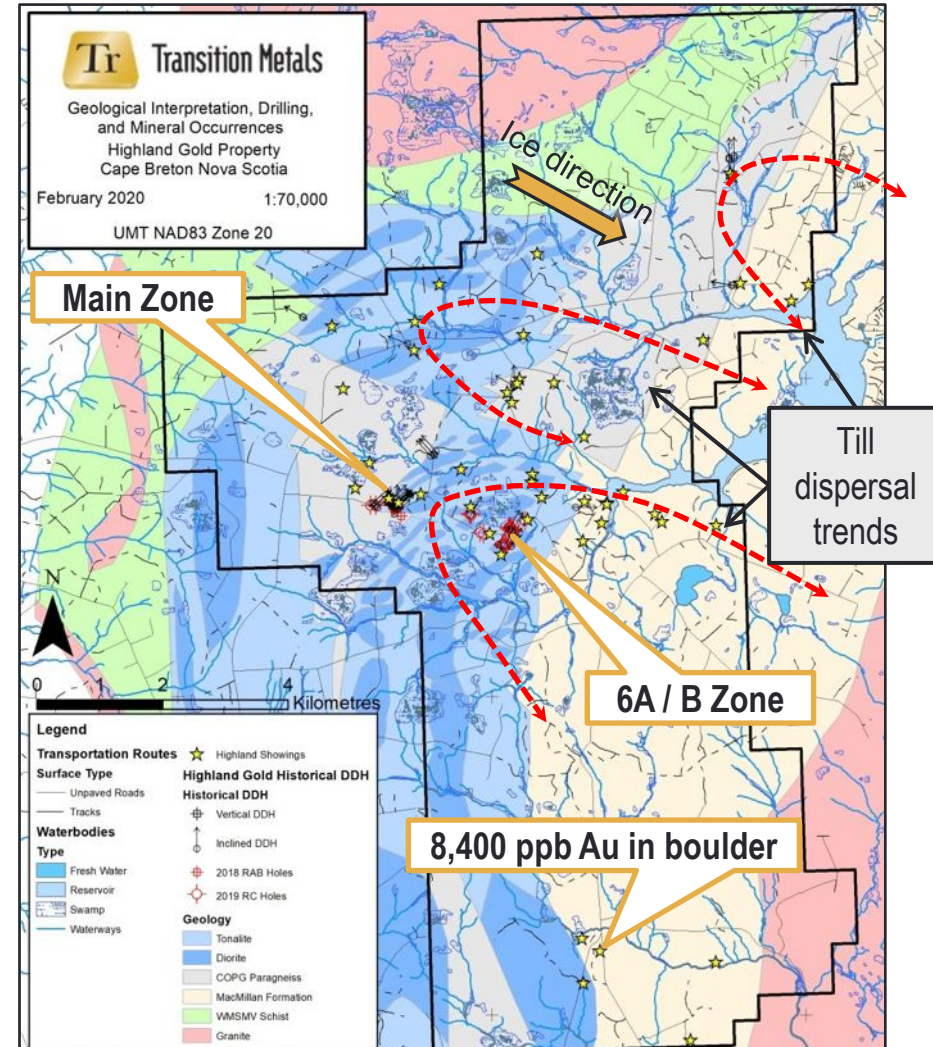
WORK COMPLETED

Historical

Inco completed till and soil sampling, and geophysics

Trenching identified

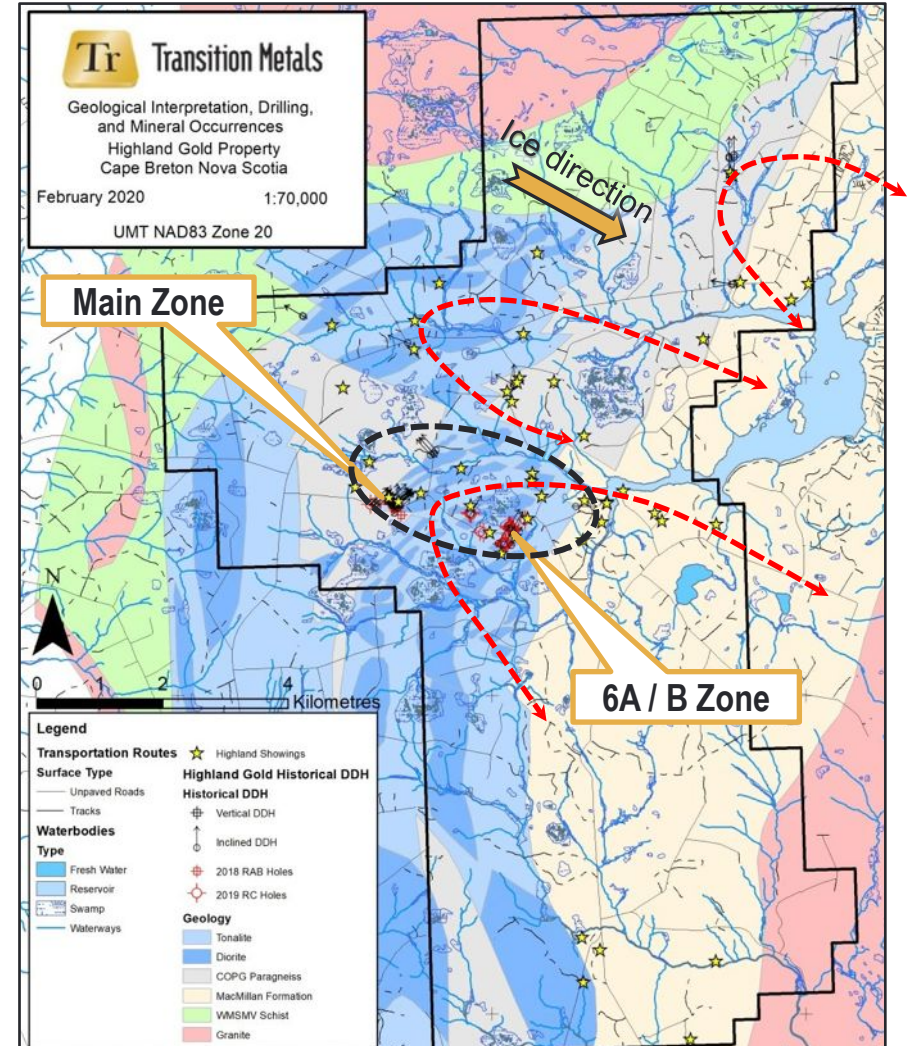
- 9 showing areas returned grab samples >8 g/t
- 23 area with >1.7 g/t
- Historical channel sampling
 - 12.8 g/t Au over 3.1m
 - 3.18 g/t Au over 3.2m (6B)
 - 3,000 tonne bulk sample with 26 g/t head grade from Main Zone



WORK COMPLETED

Historical

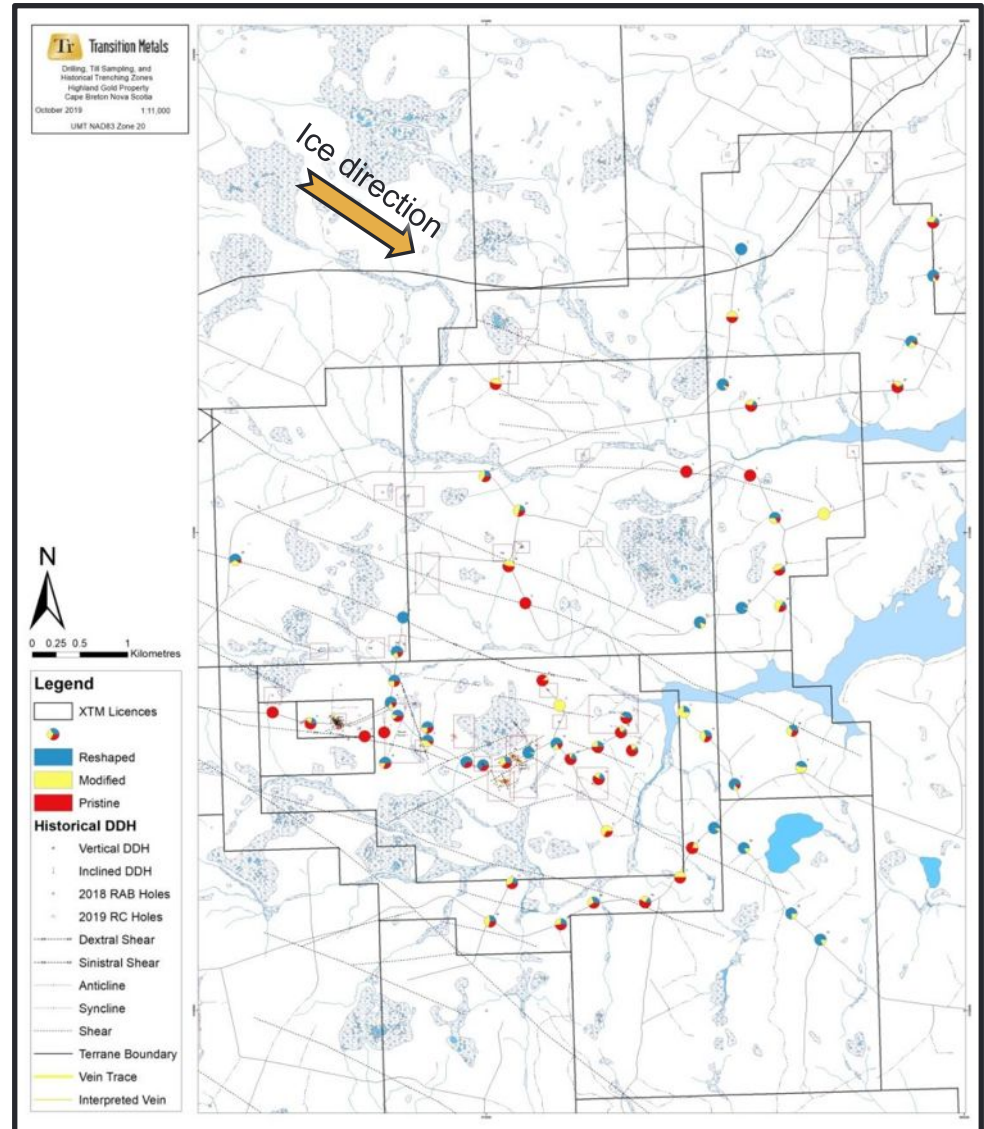
- 54 holes drilled on the property but core recovery problems (42 in black circle)
 - HL14-01 recovered 0.8 m of core over a mineralized 3.0 m interval
 - **4.95 g/t Au** over “3.0 m” (HL14-01 – Zone 6A)
 - **2.52 g/t Au** over 1.03 m (HL-14-06 – Zone 1,2,3)
 - **2.35 g/t Au** over 1.4 m (Hole 77359-0 - Zone 10)



WORK COMPLETED

Transition Metals:

- Collected and analyzed basal till and soil samples
(proportion of pristine gold grain in red)
- Conducted a 1,300 line km high resolution fixed-wing magnetic gradient and VLF-EM



WORK COMPLETED

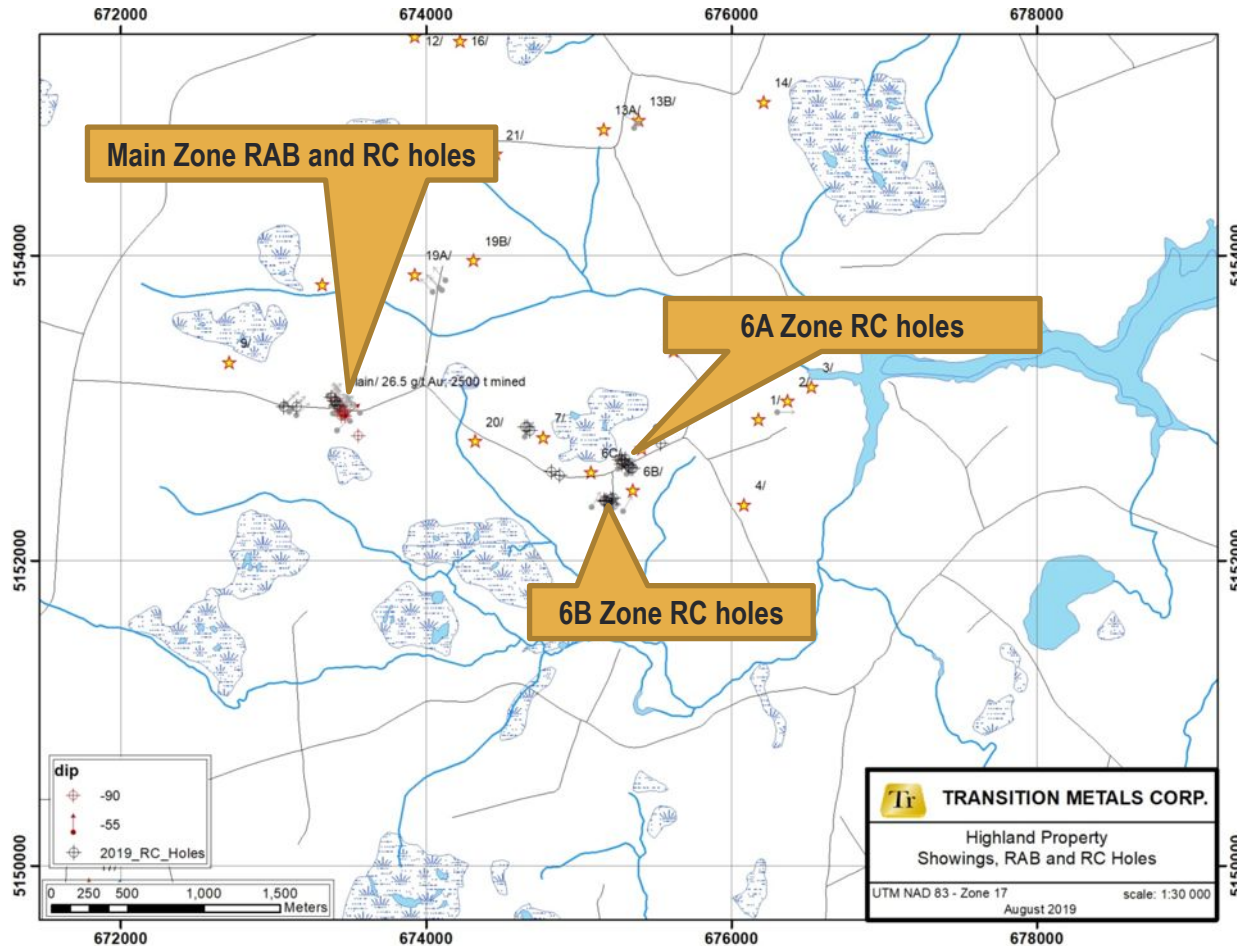
Exploration / Drilling



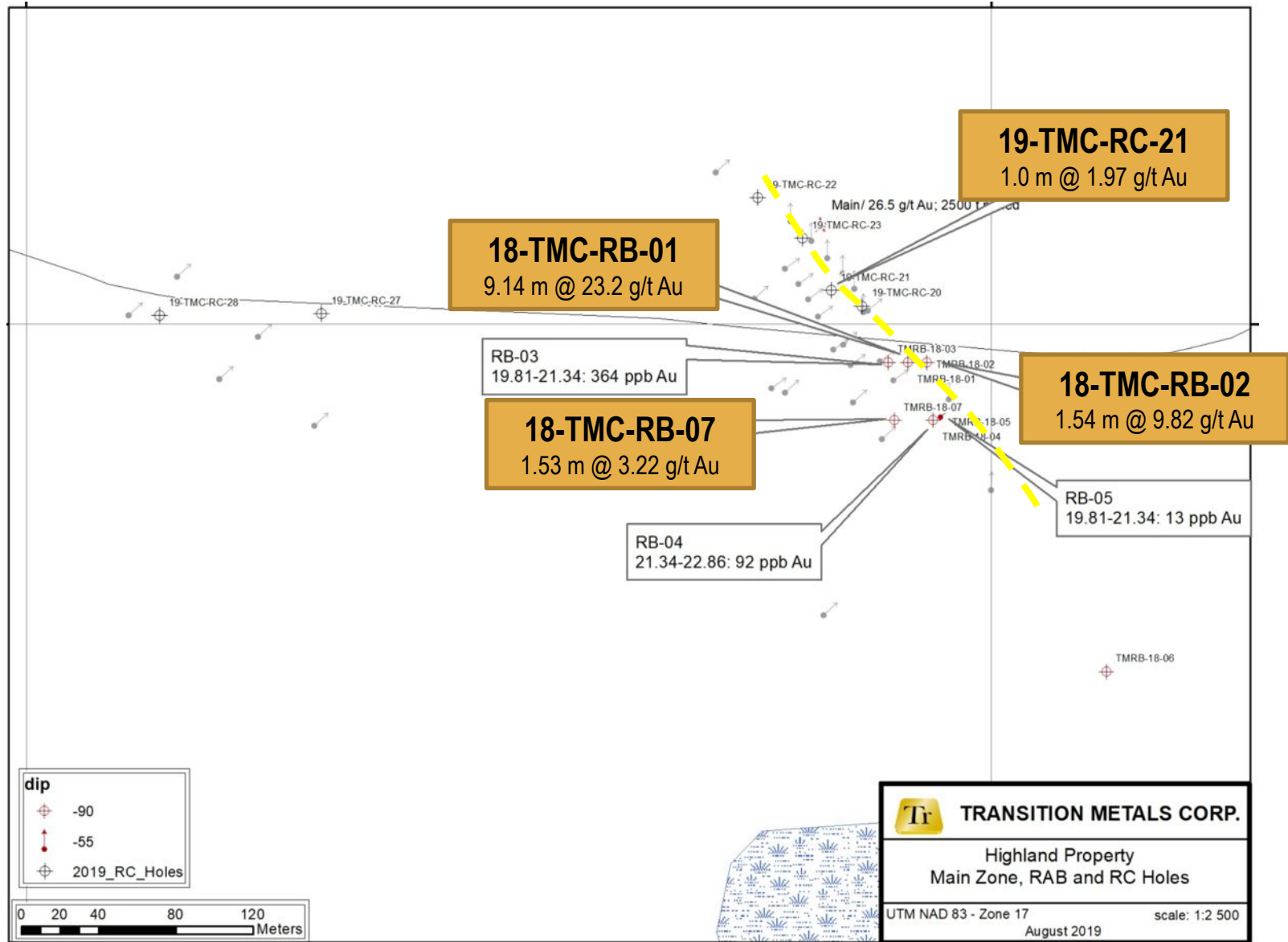
Transition Metals drilled:

2018 - 7 RAB holes for 200 m

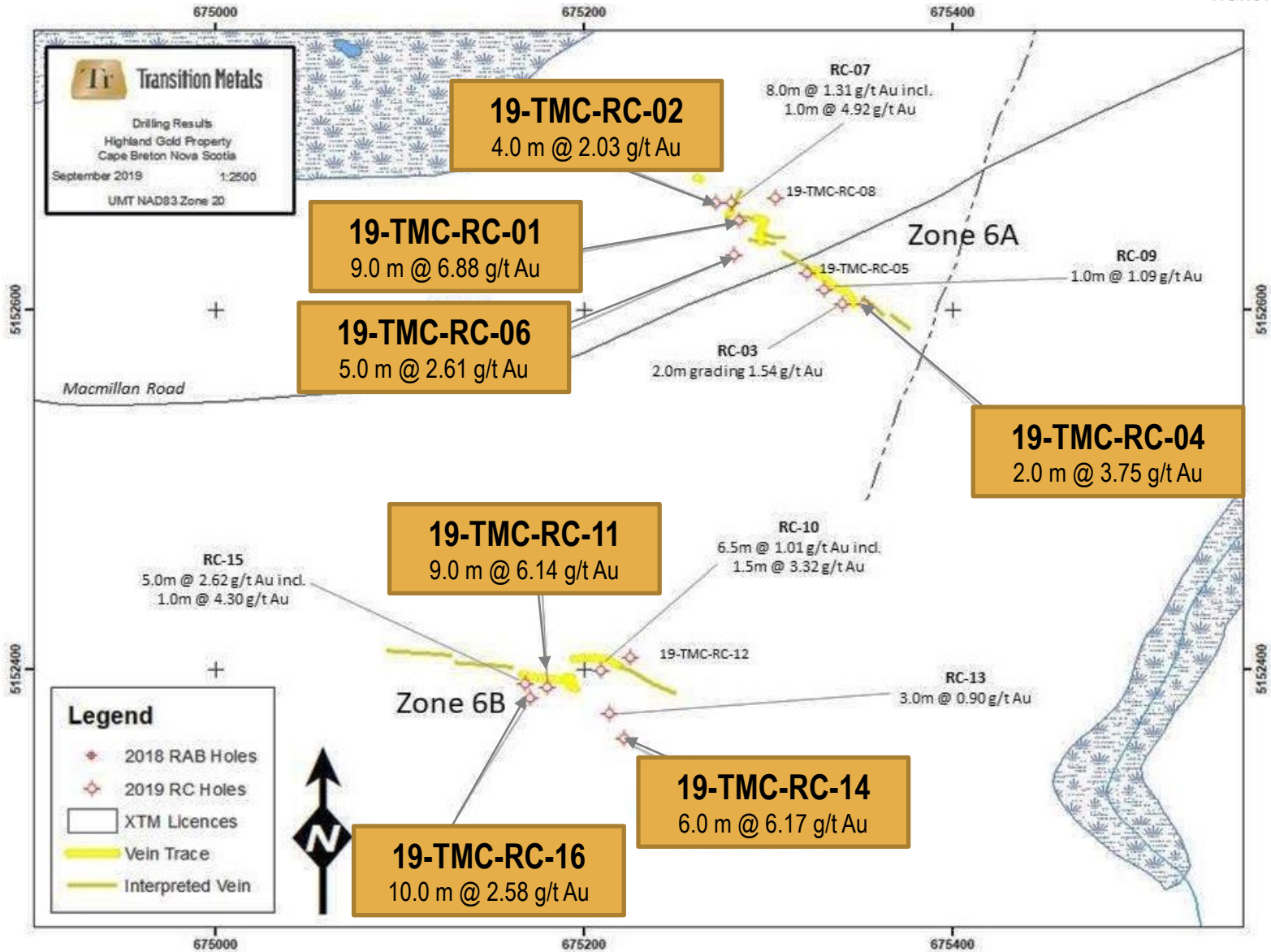
2019 - 28 RC holes for 568 m



DRILLING - MAIN ZONE

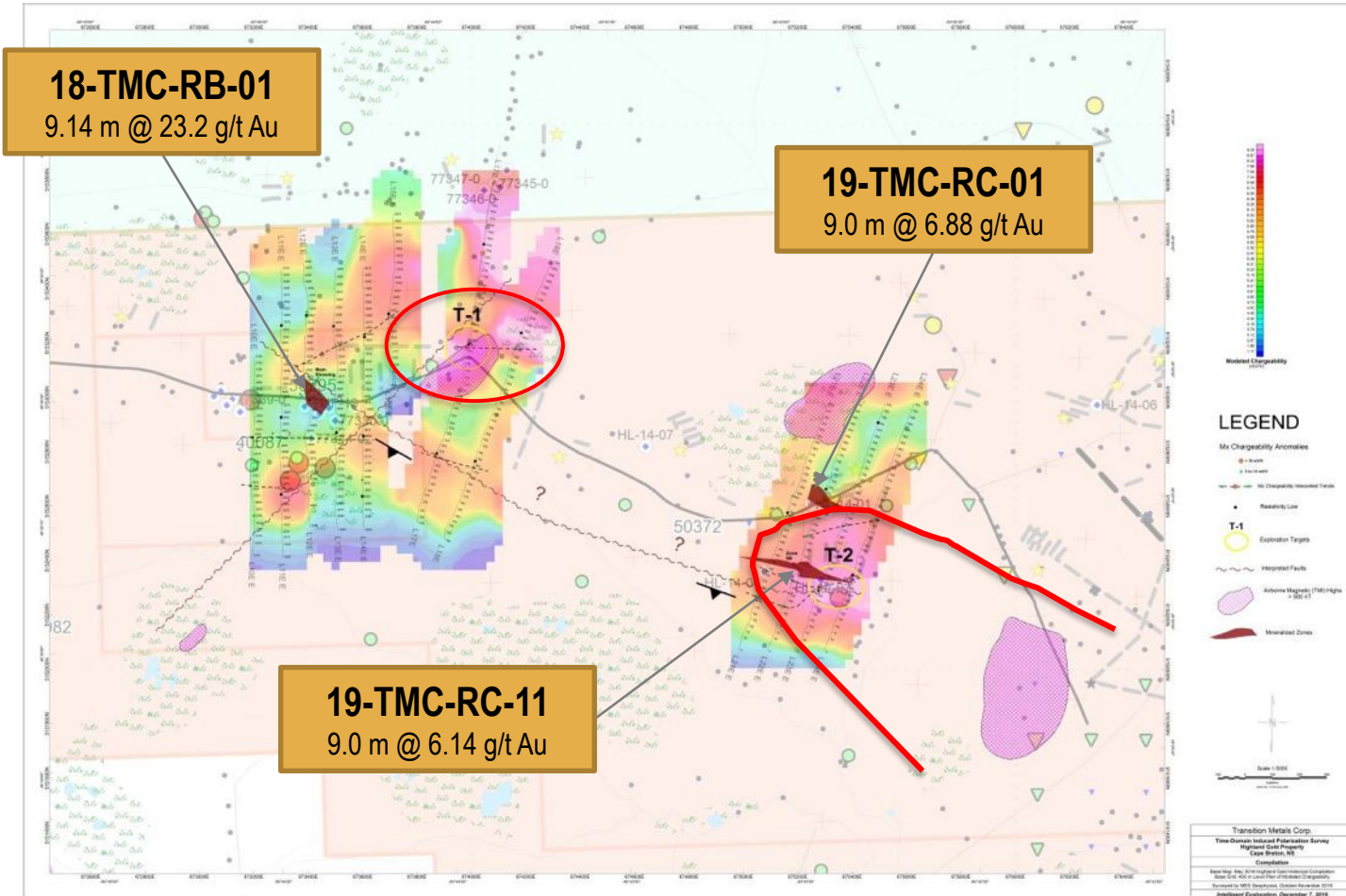


DRILLING – 6A / B ZONES



GEOPHYSICS

- Orientation IP survey – fall 2019
- Highlighted structure and chargeability anomalies



RESULTS CONTINUE TO ENCOURAGE

2018 RAB Drilling Highlights					
Hole ID	From (m)	To (m)	Length (m)	Au (g/t)	Zone
TMRB-18-01	12.19	21.34	9.14	23.22	Main
Including	12.19	15.24	3.05	49.54	Main
TMRB-18-02	6.10	9.14	3.05	5.36	Main
TMRB-18-03	19.81	21.34	1.52	0.36	Main
TMRB-18-07	27.43	28.96	1.52	3.22	Main

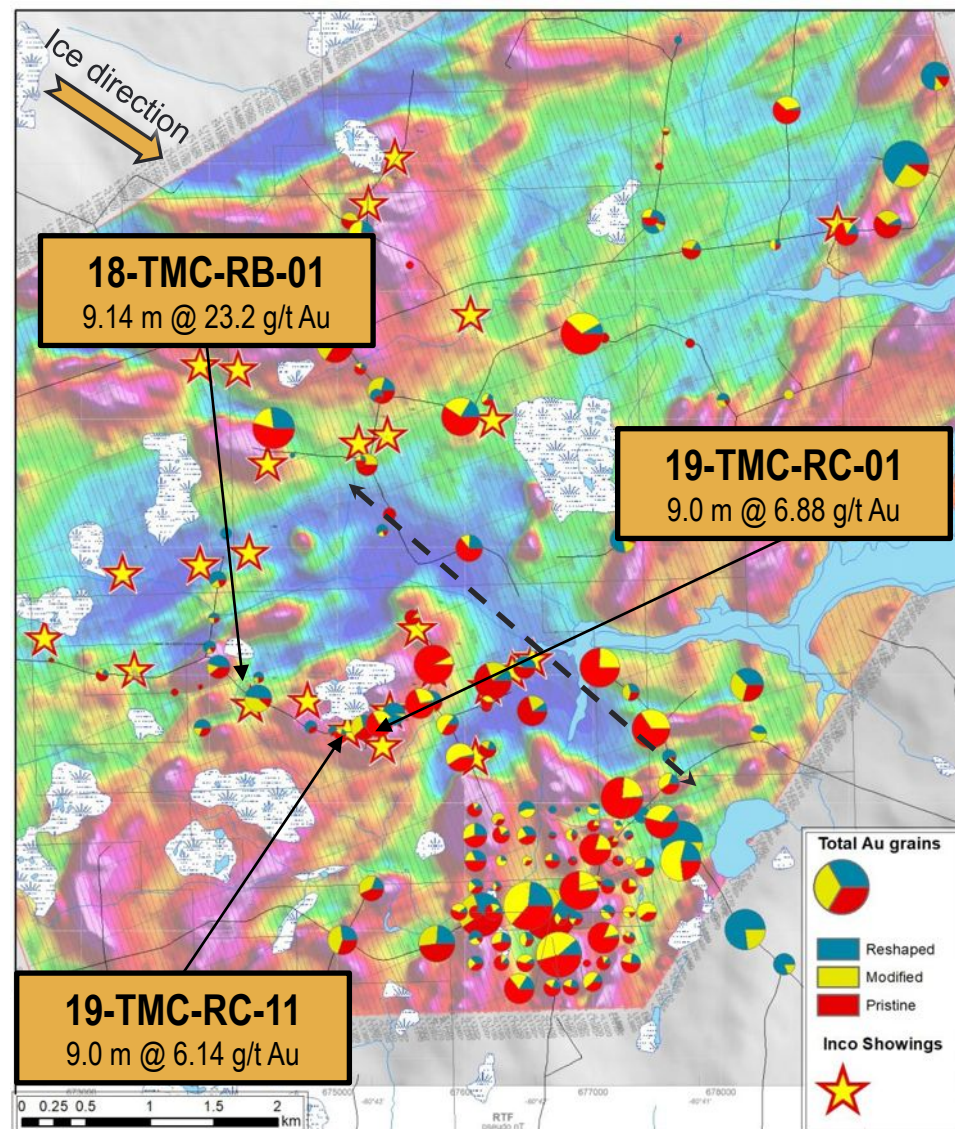
2019 RC Drilling Highlights					
Hole	From	To	Length	Au (g/t)	Zone
19-TMC-RC-01	10.00	19.00	9.00	6.88	6A
including	10.00	14.00	4.00	16.44	6A
19-TMC-RC-02	3.00	4.00	1.00	0.80	6A
and	11.00	15.00	4.00	2.03	6A
including	12.00	14.00	2.00	3.57	6A
19-TMC-RC-03	5.00	7.00	2.00	1.54	6A
19-TMC-RC-04	1.00	6.00	5.00	1.61	6A
including	2.00	4.00	2.00	3.75	6A
19-TMC-RC-06	18.00	23.00	5.00	2.61	6A
including	22.00	23.00	1.00	7.39	6A
19-TMC-RC-07	16.00	24.00	8.00	1.31	6A
including	18.00	19.00	1.00	4.92	6A
19-TMC-RC-09	3.00	4.00	1.00	1.09	6A
19-TMC-RC-10	0.00	6.50	6.50	1.01	6B
including	0.00	1.50	1.50	3.32	6B
19-TMC-RC-11	0.00	9.00	9.00	6.14	6B
including	0.00	2.00	2.00	25.46	6B
19-TMC-RC-13	6.00	9.00	3.00	0.90	6B
19-TMC-RC-14	13.00	19.00	6.00	6.17	6B
including	13.00	15.00	2.00	11.53	6B
19-TMC-RC-15	7.00	12.00	5.00	2.62	6B
including	11.00	12.00	1.00	4.30	6B
19-TMC-RC-16	17.00	27.00	10.00	2.58	6B
including	17.00	20.00	3.00	5.67	6B
19-TMC-RC-21	14.00	15.00	1.00	1.97	Main



Rob Jones, Greg Collins, and Spencer Burden at Zone 6A drill site with gold in pan – June 2019

INTERPRETATION

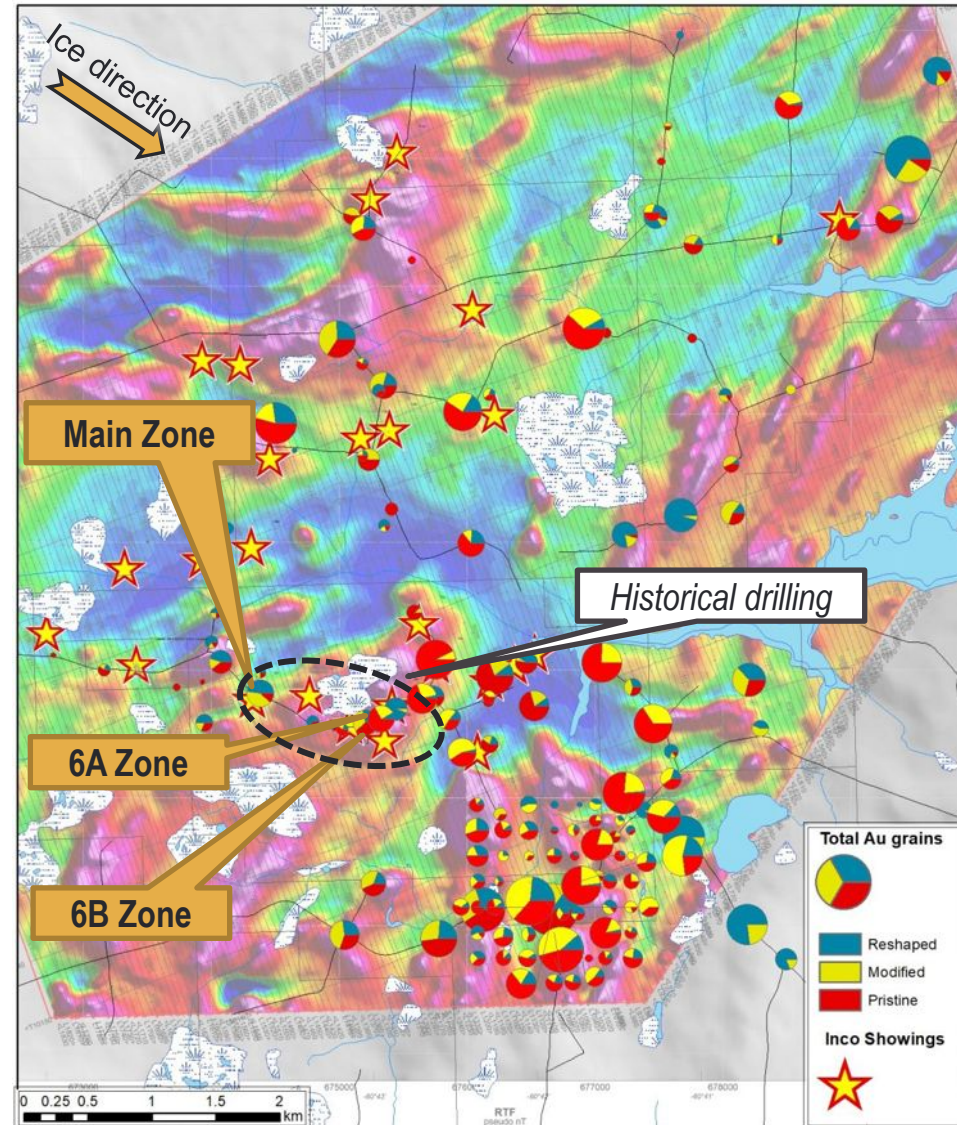
- Widespread gold mineralization in hanging wall
 - ✓ High grade gold samples at Main Zone, Zone 6A, 6B, Zone 5, Zone 1,2,3...
 - ✓ Intense epidote, quartz, albite, sericite alteration
 - ✓ Gold associated with sulphides and late stage structures
 - ✓ Coincident with low magnetic susceptibility along one of the major structures
- Evidence for big gold system
 - ✓ Consistent with propylitic style of alteration associated with deeper portions of a high sulphidation epithermal system



NEXT STEPS

- Expand the IP coverage
- Additional till and soil sampling at a property scale to better define targets at both local and regional scale
- Follow-up RC drilling along key structures 6A/B – Main
- Petrography, studies of geochem to further define controls on mineralization
- Diamond drilling to test prospective structures to below 100 m

*Transition Metals, as project generator, is actively seeking an **option partner** to further fund advanced exploration and drilling*





FORWARD- LOOKING STATEMENTS

Certain information contained in this presentation, includes information and statements which may contain words such as "could", "plans", "should", "anticipates", "expect", "believe", "will", and similar expressions and statements relating to matters that are not historical facts are forward-looking information. All of the forward-looking information contained in this presentation is qualified by this cautionary statement. There can be no assurance that the actual results or developments anticipated by Transition Metals Corporation, Sudbury Platinum Corporation or Canadian Gold Miner Corporation as expressed or implied by the forward-looking information, will be realized or, even if substantially realized, that they will have the expected consequences to or effects on Transition Metals Corp. or its business operations. Transition Metals Corp. disclaims any intention or obligation to update or revise any forward-looking information as a result of new information or future events. Readers should not place undue reliance on forward-looking information.



Scott McLean P.Geo.
CEO & Co-founder

smclean@transitionmetalscorp.com
#5 - 410 Falconbridge Road
Sudbury ON P3A 4S4
Telephone: 705-669-0590